



Genesis



Perry Homes

Indicative Artist Impression

Genesis 19



DESIGNER - 179.38m² / 19.31sq

DESIGNER PLUS - 181.07m² / 19.49sq



DESIGNER

Width: 8.65m

Depth: 22.73m

Area Sizes

Living Total	139.72m ²
Garage	20.82m ²
Porch	2.34m ²
Terrace	16.50m ²
Total Area	179.38m² / 19.31sq

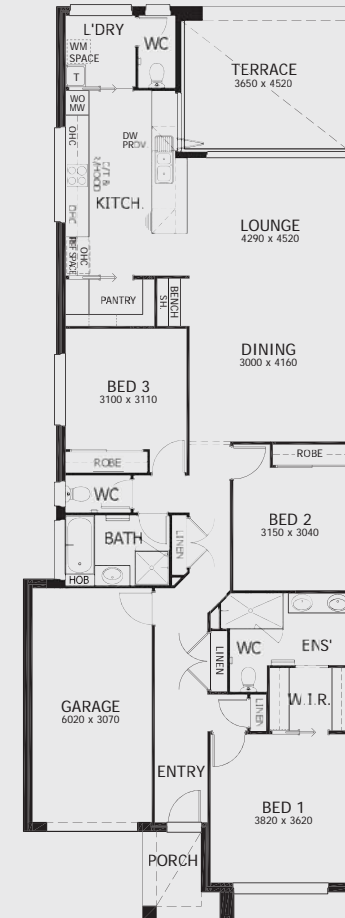
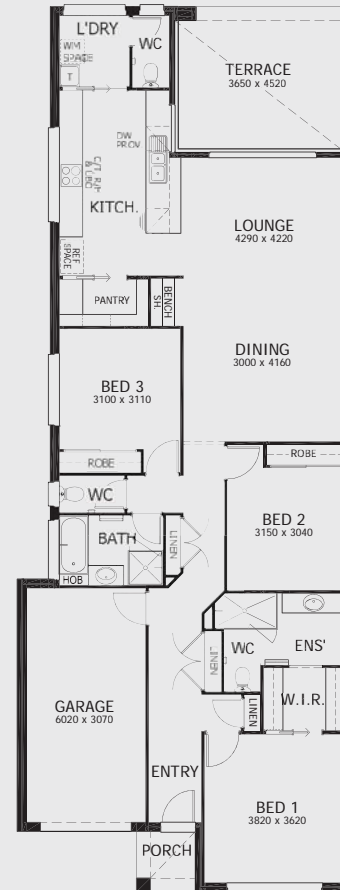
DESIGNER PLUS

Width: 8.65m

Depth: 23.45m

Area Sizes

Living Total	139.72m ²
Garage	20.82m ²
Porch	4.03m ²
Terrace	16.50m ²
Total Area	181.07m² / 19.49sq



Perry Homes

Quality homes. Exceptional value.



Perry Homes (Aust.) Pty Ltd, 49 Minjungbal Drive, Tweed Heads South, NSW 2486

Phone: (07) 5569 9400 Fax: (07) 5523 2884 perryhomes.com.au



Images, plans and dimensions in this brochure, do not necessarily accurately depict the finished product as on display. Some images may show features which are not supplied by Perry Homes, or outside our standard range, but have been used for display purposes only. Plans, prices and inclusions are subject to variation without notice. Dimensions are approximate only. For more details please consult with your sales consultant. The copyright on all floor plans is owned by Perry Homes (Aust.) Pty Ltd. These floor plans may not be reproduced, copied or dealt with in any manner which infringes the exclusive rights of Perry Homes (Aust.) Pty Ltd. as prescribed by the Copyright Act 1968 without the express written authorisation of Perry Homes (Aust.) Pty Ltd. © Perry Homes (Aust.) Pty Ltd ABN 53 090 866 630. QBCC Act Lic. No. 718748. NSW Lic. No. 110970C. April 2018. E27938